

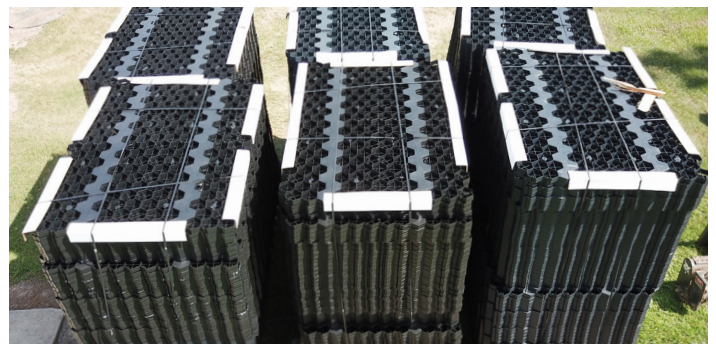


GeoBase® is a polyolefin structural grid designed to strengthen and enhance free poured concrete while offering superior flexibility and expansion/contraction capabilities.

The GeoBase system utilizes 2500 PSI concrete minimum with pea gravel or 1/2" minus stone and may consist of up to 30% flyash.



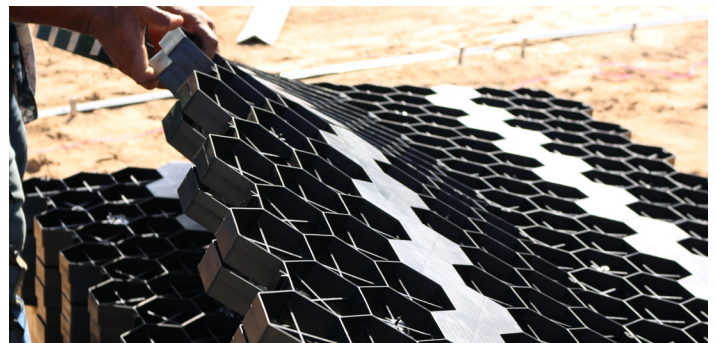
MADE FROM RECYCLED MATERIALS



MANUFACTURED IN THE UNITED STATES



NORMAL SIZE: 4' X 6'



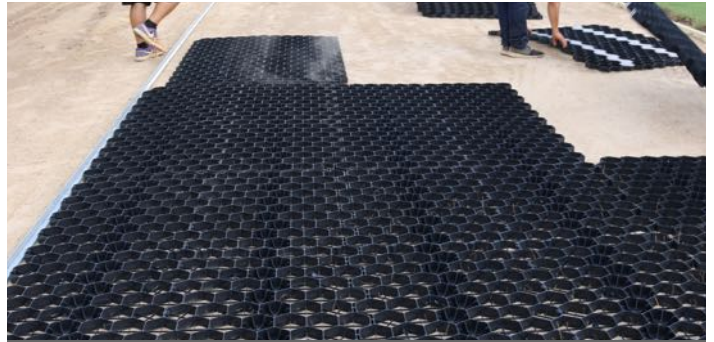
THICKNESS: 40mm



GEOBASE® STRUCTURAL GRID INSTALLATION



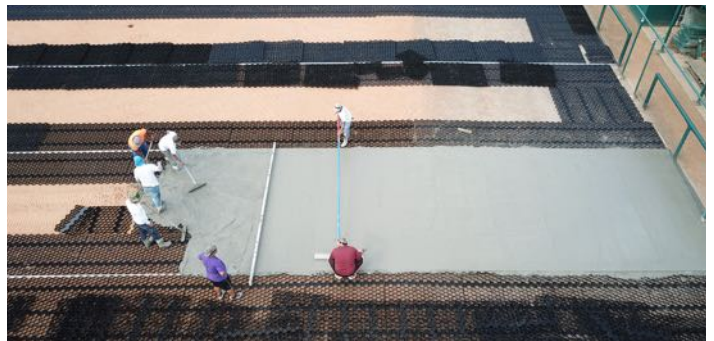
PLACEMENT OF STRUCTURAL GRID



PERFECT FIT BETWEEN PANELS



CONCRETE POURING OVER GRID



LESS OVERALL CONCRETE REQUIRED



SMOOTHING OF SURFACE



READY TO INSTALL TURF AFTER DRYING



"TURN KEY" SPORTS SURFACING

GeoSurfaces® is one of the few companies in the USA that offers in-house "turn key" sports surfacing. We are a licensed Professional Engineering Firm, Electrical Firm, General Contractor and Construction Manager that can offer complete construction and installation of FIFA, IAAF and ITF Approved Surfaces while also offering full design and installation of our Sports Lighting technologies.