

# Plexipave®



*100% Acrylic Color Finish System*

For Asphalt and Concrete Surfaces



# **Plexipave<sup>®</sup>**

## **Sport Surfacing Systems**

**100% ACRYLIC COLOR FINISH SYSTEM**



**AUSTRALIAN OPEN TRUE BLUE**



**AUSTRALIAN OPEN VELOCITY BLUE**



**US OPEN BLUE™**



**PACIFIC BLUE**



**LIGHT GREEN**



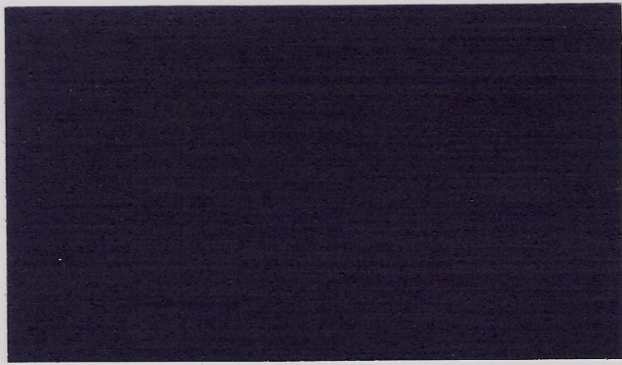
**DARK GREEN**



**FLORIDA GREEN**

All color chips are affected by light, heat and the printing process. Chips on this card may vary in color and texture from the actual product in the drum. Samples shown are based on a sand filled fortified Plexipave mix. Other textures will vary in color. Pro Purple, US Open Blue, Australian Open Velocity Blue and Australian Open True Blue are at a higher price due to high pigment costs. Special colors are available at a higher price based on pigments needed and production quantities. US Open Blue is a registered trademark of the USTA, used with permission. Australian Open True Blue and Australian Open Velocity Blue are specially formulated on behalf of Tennis Australia.





**PRO PURPLE**



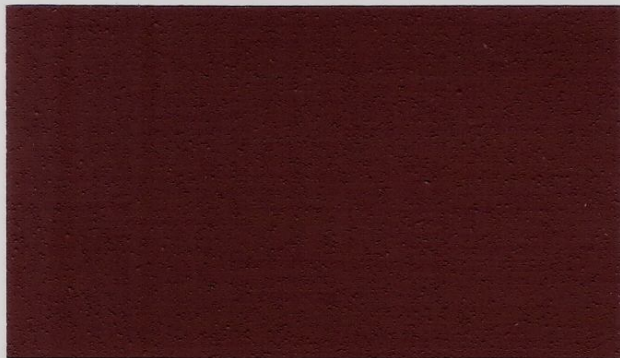
**BROWN**



**MAROON**



**SAHARA SAND**



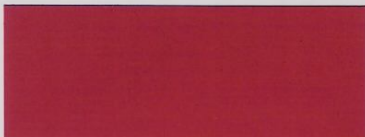
**CALIFORNIA RED**



**CAPE GRAY**

## **LINE PAINT**

For line marking of tennis courts, running tracks and play areas. Line Paint is also available in White and Textured White.



**RED**



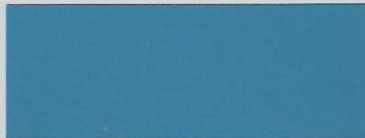
**ORANGE**



**YELLOW**



**GREEN**



**BLUE**

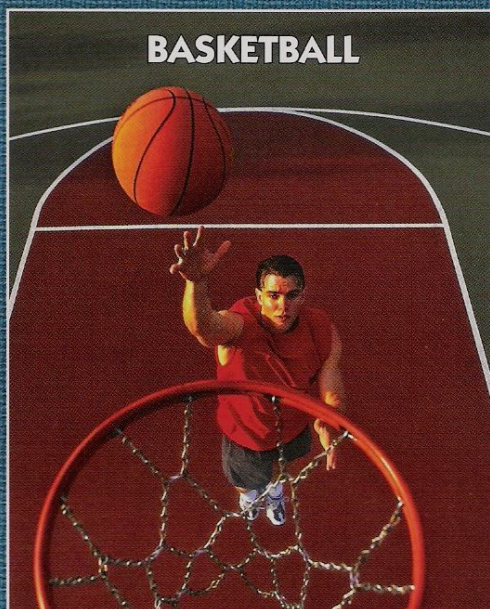


**BLACK**





**TENNIS COURTS**



**BASKETBALL**



**RECREATIONAL AREAS**

## COURT SURFACE COLORS

The court color masters at Plexipave collaborate with owners, governing bodies and event organizers to balance visibility, aesthetics, and surface temperature when choosing court surface colors and backgrounds.

While there are typically no right or wrong colors to use on a court surface, certain colors clearly perform better than others in the game. Ideally, a player wants to have optimal visibility for his or her game. In court sports this is achieved by having the best possible contrast between the ball and the surface. In recreational surfaces it is achieved by a sharp contrast between the specified markings and the recommended or required surface colors. Additional technical considerations include playability and durability, both of which are effected by color choice.

Court aesthetics are also becoming a dominating criteria for court color selection because colors can be used very effectively to build and reinforce facility identity at tournaments and events.

Plexipave systems are formulated to meet the requirements of players at any level. For tennis courts, there are three systems to choose from, offering varying degrees of speed and playability, all rated by the governing body of the game, the International Tennis Federation (ITF).

### **PLEXIPAVE STANDARD**

**ITF CATEGORY: 3**

**PACE: MEDIUM**

The traditional and most widely used mixture, Standard Plexipave provides a consistent and reliable medium-pace playing surface.

### **PLEXIPAVE HU**

**ITF CATEGORY: 4**

**PACE: MEDIUM-FAST**

Harvard University has been the birthplace of many great innovations and playing traditions. Plexipave H.U. is no exception. It has also been adapted as the standard for the Australian Open Series.

### **PLEXIPAVE IW**

**ITF CATEGORY: 1**

**PACE: SLOW**

For those who desire a much slower surface, to compensate for lower humidity or simply to change the pace of the game, Plexipave has developed the I.W. mixture, first used at the Indian Wells, CA tournament facility.

**VISIT US ON-LINE FOR DETAILED SPECIFICATIONS OF ALL PLEXIPAVE SYSTEMS AND PLEXIPAVE COURT COLORS.**

**CLICK THE COURT COLORIZER BUTTON FOR MORE OPTIONS.**

**AUTHORIZED APPLICATOR**

Member of the



**Plexipave**  
Sport Surfacing Systems

Division of California Products Corp. | 150 Dascomb Road, Andover, MA 01810, USA  
Toll Free: 800.225.1141 | Phone: 978.623.9980 | Fax: 978.623.9960  
www.plexipave.com | info@plexipave.com