

PATENTED

GEO FLO™
SHOCK PAD

GeoFlo+™ is proudly
MADE IN USA

GEOFLO+™ DYNAMIC SHOCK PAD & DRAINAGE BLANKET

GeoFlo+ is a patented high compressive strength, moisture conducting, non-absorbent, geo-composite shock pad made from polyolefin materials. GeoFlo+ is a pre-fabricated system that consists of a formed expanded polypropylene core. It is a highly resilient closed-cell expanded bead foam product, and is an ideal energy absorbing material for sport surfaces that requires impact protection and shock absorption. The use of GeoFlo+ greatly reduces risk factors associated with poor subsurface soils. Installation provides an uninterrupted vertical-to-horizontal flow path for superior rainfall evacuation and enhanced G-MAX performance without changing the ball-action or feel under-foot. The integrity of the system's moisture-seal is maintained by use of an impervious bonding tape, which also expands and contracts, thus maintaining the function of the integral expansion joints. The proper installation of the GeoFlo+ system reduces G-MAX by up to 50 points.



PHYSICAL PROPERTIES	TEST METHOD	SAE	DATA
Tensile Strength	ASTM-D3575	psi	55.5
Tensile Elongation	ASTM-D3575	%	18
Tear Strength	ASTM-D3575	lbs/ft	13
Thermal Conductivity (K)	ASTM-C177	BTU-in/ft ² -hr-°F	0.25
Thermal Resistance (R)	ASTM-C177	@70°F	3.9
Coeff. of Lin. Therman Expansion	ASTM-D696	in/in/°F x 10 ⁻⁵	5.7
Service Temperature	ASTM-D3575	°F (Max)	212
Water Absorption	ASTM-D3575/C272	%	<5.0
Compressive Creep	ASTM-D3575	% (psi)	1.2(2.0)
Flammability	FMVSS-302	<4.0in/min	Pass

PLEASE NOTE: For standard Geo-Surfaces Products. Values shown are typical of the product and should not be construed as specification limits.

PROPERTIES

GeoFlo+ is multi-directional (isotropic) in nature, so unlike traditional extruded foams, which yield different properties along the extrusion, vertical and horizontal axes, the properties of the GeoFlo+ products are the same for a given density along all 3 axes, regardless of orientation.

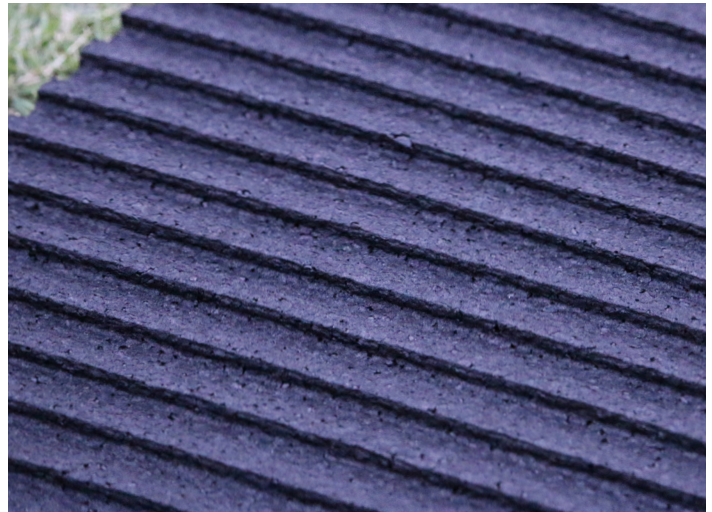


RESILIENT POLYPROPYLENE SHOCK PAD

Nominal Size 4' x 6'
Thickness 24 mm

Horizontal Drainage -- 50" per hour Minimum
Maximum Initial G-MAX Less than 100

Guarantee maximum average G-MAX of field of 125 during 8-year warranty period of turf. (ASTM) F355; system test under infilled turf.



RESISTANCE

Flammability Resistance TEST FMVSS-302: **Pass**
Fuel Immersion Test Coast Guard (Fuel B): **Pass**
Chemical Resistance (1 Hour Exposure to Solvents): **Pass**



A PROFESSIONAL ENGINEERING FIRM

Geo-Surfaces is one of the few companies in the USA that offers in-house "turn key" sports lighting and sports surfacing. We are a licensed Professional Engineering Firm, Electrical Firm, General Contractor and Construction Manager that can offer complete construction and installation of FIFA, IAAF and ITF Approved Surfaces while also offering full design and installation of our Sports Lighting technologies.